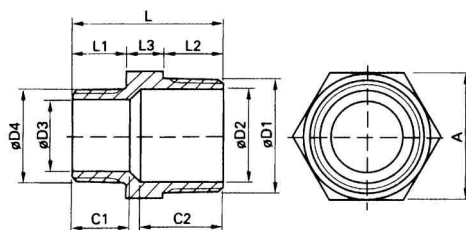


Złącza gwintowane ITALINOX-POLSKA

REDUKCJA GWINTOWANA wkrtna z sześciokątem Z13



gwint wykonany wg normy:
DIN

materiał: AISI 304, AISI 316

Rozmiar	A	D1	D2	D3	D4	C1	C2	L	L1	L2	L3
cal	mm	cal	mm	mm	cal	mm	mm	mm	mm	mm	mm
1/4"x1/8"	17,0	1/4"	8,5	5,0	1/8"	12,0	18,0	31,5	11,0	12,0	8,5
3/8"x1/8"	21,0	3/8"	10,5	5,0	1/8"	11,0	21,0	35,0	12,0	13,0	10,0
3/8"x1/4"	21,0	3/8"	10,5	8,5	1/4"	14,0	20,0	35,0	12,0	13,0	10,0
1/2"x1/8"	26,0	1/2"	14,5	5,0	1/8"	11,0	21,0	39,0	12,0	17,0	10,0
1/2"x1/4"	26,0	1/2"	14,5	8,5	1/4"	14,0	22,0	39,0	12,0	17,0	10,0
1/2"x3/8"	26,0	1/2"	14,5	10,5	3/8"	15,0	22,0	39,0	13,0	16,0	10,0
3/4"x1/8"	32,0	3/4"	20,0	5,0	1/8"	12,0	27,0	41,0	10,5	19,0	11,5
3/4"x1/4"	32,0	3/4"	20,0	8,5	1/4"	13,0	26,0	42,0	11,5	19,0	11,5
3/4"x3/8"	32,0	3/4"	20,0	10,5	3/8"	13,0	25,0	42,0	11,5	19,0	11,5
3/4"x1/2"	32,0	3/4"	20,0	14,5	1/2"	17,0	25,0	45,0	14,5	19,0	11,5
1"x1/4"	38,0	1"	25,5	8,5	1/4"	15,0	28,0	45,5	13,5	20,0	12,0
1"x3/8"	38,0	1"	25,5	10,5	3/8"	15,0	28,0	45,0	13,0	20,0	12,0
1"x1/2"	38,0	1"	25,5	14,5	1/2"	18,0	28,0	48,0	16,0	20,0	12,0
1"x3/4"	38,0	1"	25,5	20,0	3/4"	19,0	29,0	51,0	19,0	20,0	12,0
1 1/4"x1/4"	46,0	1 1/4"	34,0	8,5	1/4"	15,0	29,0	47,0	14,0	21,0	12,0
1 1/4"x3/8"	46,0	1 1/4"	34,0	10,5	3/8"	18,0	30,0	49,0	14,0	23,0	12,0
1 1/4"x1/2"	46,0	1 1/4"	34,0	14,5	1/2"	18,0	30,0	51,0	17,0	22,0	12,0
1 1/4"x3/4"	46,0	1 1/4"	34,0	20,0	3/4"	19,0	32,0	55,0	19,0	24,0	12,0
1 1/4"x1"	46,0	1 1/4"	34,0	25,5	1"	22,0	29,0	54,0	20,0	22,0	12,0
1 1/2"x1/4"	54,0	1 1/2"	39,0	8,5	1/4"	15,0	31,0	48,0	12,5	22,5	13,0
1 1/2"x3/8"	54,0	1 1/2"	39,0	10,5	3/8"	15,0	31,0	48,0	12,5	22,5	13,0
1 1/2"x1/2"	54,0	1 1/2"	39,0	14,5	1/2"	15,0	32,0	50,0	14,5	22,5	13,0
1 1/2"x3/4"	54,0	1 1/2"	39,0	20,0	3/4"	19,0	31,0	53,0	17,5	22,5	13,0
1 1/2"x1"	54,0	1 1/2"	39,0	25,5	1"	22,0	29,0	54,0	19,5	21,5	13,0
1 1/2"x1 1/4"	54,0	1 1/2"	39,0	34,0	1 1/4"	26,0	29,0	58,0	22,5	22,5	13,0
2"x1/4"	63,0	2"	51,0	8,5	1/4"	16,0	37,0	55,0	13,0	26,0	16,0
2"x3/8"	63,0	2"	51,0	10,5	3/8"	17,0	37,0	57,0	15,0	26,0	16,0
2"x1/2"	63,0	2"	51,0	14,5	1/2"	18,0	37,0	58,0	17,0	25,0	16,0
2"x3/4"	63,0	2"	51,0	20,0	3/4"	20,0	36,0	60,0	18,0	26,0	16,0
2"x1"	63,0	2"	51,0	25,5	1"	22,0	36,0	62,0	20,0	26,0	16,0
2"x1 1/4"	63,0	2"	51,0	34,0	1 1/4"	23,0	37,0	63,0	21,0	26,0	16,0
2"x1 1/2"	63,0	2"	51,0	39,0	1 1/2"	24,0	37,0	65,0	23,0	26,0	16,0
2 1/2"x1/2"	80,0	2 1/2"	64,0	14,5	1/2"	20,0	39,0	62,0	16,0	30,0	16,0
2 1/2"x3/4"	80,0	2 1/2"	64,0	20,0	3/4"	22,0	38,0	63,0	18,0	29,0	16,0
2 1/2"x1"	80,0	2 1/2"	64,0	25,5	1"	24,0	38,0	65,0	20,0	29,0	16,0
2 1/2"x1 1/4"	80,0	2 1/2"	64,0	34,0	1 1/4"	26,0	37,0	67,0	22,0	29,0	16,0
2 1/2"x1 1/2"	80,0	2 1/2"	64,0	39,0	1 1/2"	27,0	38,0	68,0	23,0	29,0	16,0
2 1/2"x2"	80,0	2 1/2"	64,0	51,0	2"	28,0	37,0	69,0	25,0	28,0	16,0
3"x1/2"	95,0	3"	76,0	14,5	1/2"	21,0	42,0	66,0	16,0	33,0	17,0
3"x3/4"	95,0	3"	76,0	20,0	3/4"	22,0	43,0	68,0	18,0	33,0	17,0
3"x1"	95,0	3"	76,0	25,5	1"	24,0	43,0	70,0	20,0	33,0	17,0
3"x1 1/4"	95,0	3"	76,0	34,0	1 1/4"	26,0	43,0	72,0	22,0	33,0	17,0
3"x1 1/2"	95,0	3"	76,0	39,0	1 1/2"	27,0	43,0	73,0	23,0	33,0	17,0
3"x2"	95,0	3"	76,0	51,0	2"	29,0	43,0	75,0	25,0	33,0	17,0
3"x2 1/2"	95,0	3"	76,0	64,0	2 1/2"	31,0	43,0	77,0	27,0	33,0	17,0
4"x3/4"	120,0	4"	102,0	20,0	3/4"	22,0	48,0	73,0	18,0	38,0	17,0
4"x1"	120,0	4"	102,0	25,5	1"	25,0	48,0	75,0	20,0	38,0	17,0
4"x1 1/4"	120,0	4"	102,0	34,0	1 1/4"	25,0	48,0	76,0	21,0	38,0	17,0
4"x1 1/2"	120,0	4"	102,0	39,0	1 1/2"	30,0	48,0	81,0	26,0	38,0	17,0
4"x2"	120,0	4"	102,0	51,0	2"	29,0	48,0	80,0	25,0	38,0	17,0
4"x2 1/2"	120,0	4"	102,0	64,0	2 1/2"	29,0	48,0	83,0	28,0	38,0	17,0
4"x3"	120,0	4"	102,0	76,0	3"	36,0	48,0	87,0	32,0	38,0	17,0